

声明:

本目录所有说明及数据仅为推荐用途，应属可靠，但并不保证其准确性及特定情况下的适用性。现有数据仅为实验室标准环境下，小型测试工具的测试结果，未必与工业运作中的效能相符合。铭成传动保留在任何时候且无需进行任何事先通知的情况下，自行决定修改与本目录中描述的皮带相关的规格、性能和其他信息的权利。

产品使用情况并非铭成传动及其附属公司所能控制，本公司无法保证产品适用性及其效能、制程结果、产量及制品;对于可能的瑕疵、损害、衍生损害及进一步的结果，本公司亦不负责。

Statement:

All descriptions and data contained in this catalogue are for recommended purposes only and shall be reliable, without warranting their accuracy and applicability in any particular case. The existing data only for laboratory standard environment, the test results of small test tools may not be consistent with the performance of industrial operations. Ming Cheng transmission reserves the right to modify specifications, performance and other information relating to the belts described in this catalogue at any time and without prior notice. Product usage is not under the control of Mingcheng transmission and its subsidiaries. The company can not guarantee the applicability and effectiveness of the product, process results, output and products; We shall not be liable for any possible defects, damages, derivative damages or further consequences.



无锡铭成传动科技有限公司

Wuxi Mingcheng Transmission Technology Co.,Ltd

地址: 无锡市新吴区荆同工业园区42号厂房三楼

联系方式: 0510-81154942

传真: 0510-85258445

网址: www.wxmcctd.com

邮箱: wxminsens@163.com

บริษัท หมิงเจิง ทราเนชั่น (ประเทศไทย) จำกัด สำนักงานใหญ่

Mingcheng Transmission (Thailand) Co., Ltd.

หมายเลขผู้เสียภาษี Tax 0215566014354

489 หมู่ที่ 2 ตำบลพนาภิรม อำเภอนิคมน้ำอ้น จ.ระยอง 21180

489 Moo2 T.Phananikom A. NikhomPhatthana Rayong 21180

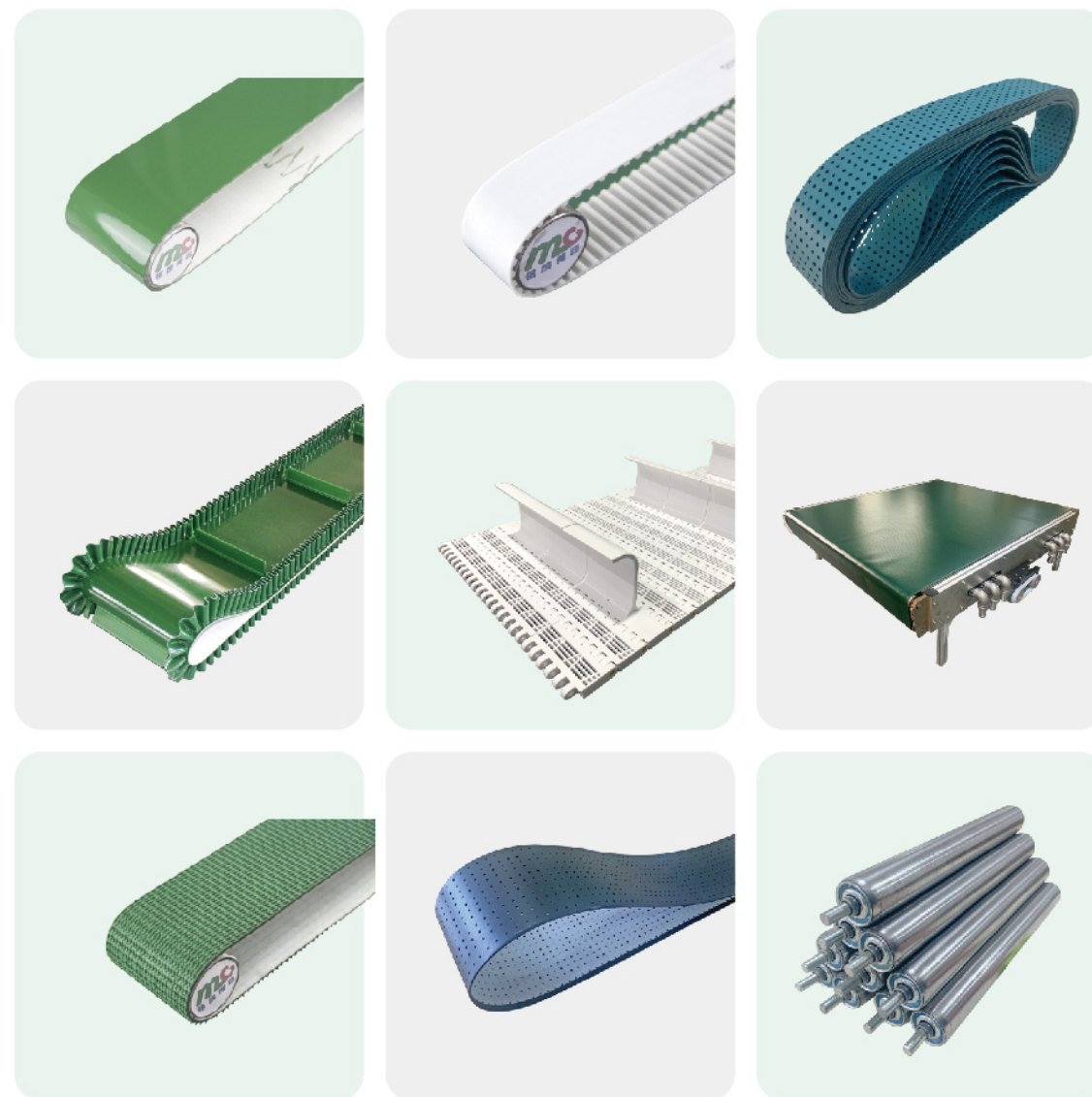
Liu wei 098-0466433

Huang qi yong 098-045-6890

销售电话 098-607-4560

工业自动化 铭成传动产品手册

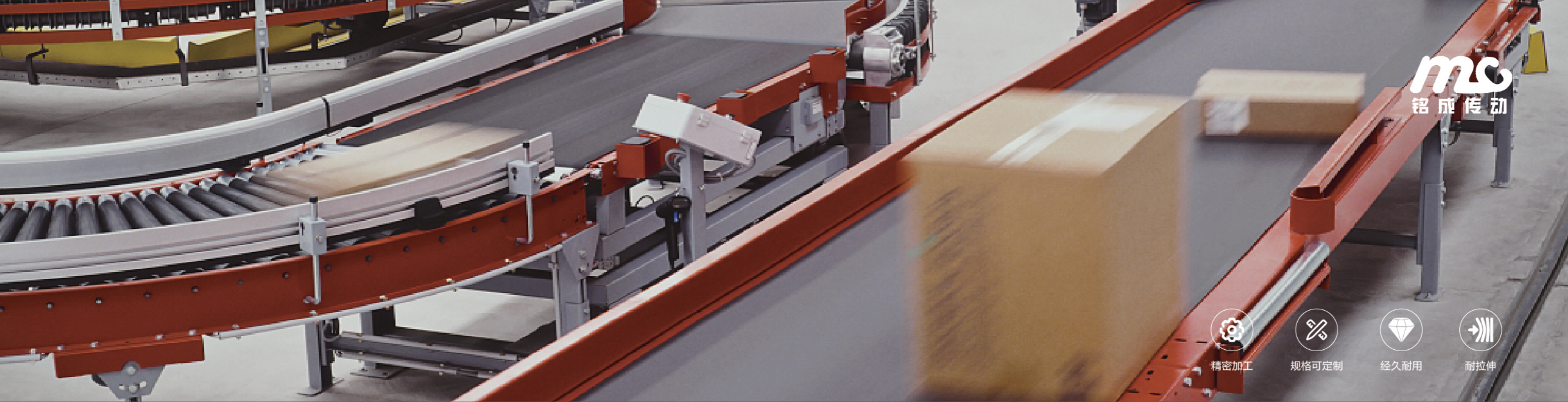
Ming Cheng Conveyor Belts



无锡铭成传动科技有限公司

Wuxi Mingcheng Transmission Technology Co.,Ltd





精密加工



规格可定制



经久耐用



耐拉伸

COMPANY PROFILE

企业简介

铭成传动创立于2009年，是一家专注于工业皮带及输送系统领域的专业制造商和解决方案供应商。公司致力于为各行业提供高效、可靠的传动及输送设备，以满足不同工况下的生产需求。

铭成传动主要从事工业皮带、输送机及相关配件的研发、生产和销售。公司的产品广泛应用于食品加工、电子制造、锂电、光伏、汽车轮胎、物流、机场、烟草、印刷包装、原材料加工、运动休闲等众多领域。

公司通过ISO9001质量管理体系，从原材料到成品交付，每一步的严格控制保证了产品的高质量。通过对行业需求的深入理解，公司不断优化产品设计，确保设备能够在严苛环境下长期稳定运行。

2024年铭成传动泰国公司的成立进一步扩展海外市场，更贴近东南亚客户。为当地及周边国家客户提供更快捷、高效的服务。

未来，铭成传动将继续专注于工业皮带和输送系统的技术创新，推动自动化、智能化输送设备的发展，致力于成为全球领先的工业传动与输送解决方案提供商

Mingcheng Transmission was founded in 2009 and is a professional manufacturer and solution provider focusing on the field of industrial belts and conveying. The company is committed to providing various industries with efficient and reliable transmission and conveying equipment to meet production needs under different working conditions.

Mingcheng Transmission is mainly engaged in the research, development, production, and sale of industrial belts, conveyors, and related accessories. The's products are widely used in various fields such as food processing, electronic manufacturing, lithium batteries, photovoltaics, automobile tires, logistics, airports, tobacco, and packaging, raw material processing, and sports and leisure.

The company has passed the ISO9001 quality management system, and strict control at every step from raw materials to finished product delivery ensures high products. With a deep understanding of industry needs, the company continuously optimizes product design to ensure that equipment can operate stably in harsh environments for a long time

The establishment of MINGCHENG Thailand Co., Ltd. in 2013 further expanded the overseas market, bringing us closer to our in Southeast Asia. We provide faster and more efficient service to customers in the local area and surrounding countries.

In the future, Mingsheng Transmission will continue to focus on technological innovation in industrial belts and conveying systems, promoting the development of automated and conveying equipment, and striving to become a world-leading provider of industrial transmission and conveying solutions.

CORPORATE CULTURE

企业文化



高新技术企业认证
High-tech enterprise certification



并取得多项实用型专利证书。
And obtain a number of practical patent certificates.

经营宗旨

品质为本，客户至上，持续创新，诚信服务。

管理理念

以人为本，科学管理，团队协作，合作创新

Business Purpose: Quality is the foundation, customer is the priority, continuous innovation, sincere service.
management philosophy: People-oriented, scientific management, team collaboration, cooperative innovation

铭城传动，让传动更高效！

Ming Cheng transmission, make transmission more efficient!

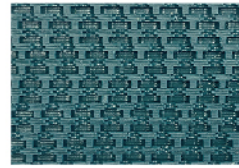
产品系列 Product line	产品型号 Model	表面Surface			底面Bottom			厚度 Thickness	布层数 Fabric layer number	最小辊轮直径 Φ mm The minimum roller diameter is φ mm	1%延展受力 N/mm 1% extension force N/mm	单位重量 kg/m ²	摩擦系数 Coefficient of friction	工作温度℃ Operating Temperature℃	最大生产宽度 Maximum production width	横向稳定 Lateral stability	成槽性 Slotting	刀口 Blade	低噪音 Low noise	耐油性 Oil resistance	防静电 Anti-static
		材质 Material	颜色 Color	花纹 Patterns	材质 Material	颜色 Color	花纹 Patterns														
普通输送带 Ordinary conveyor belt	H10P1-4W/01	PVC	白	亮光	PET	白	布纹	1.0	1	10	4	1.0	0.2	-10~+70	3000	•	-	•	-	-	-
	H10P1-4G/01	PVC	绿	亮光	PET	白	布纹	1.0	1	10	4	1.0	0.2	-10~+70	3000	•	-	•	-	-	-
	H10P1-4BK/01	PVC	黑	亮光	PET	白	布纹	1.0	1	10	4	1.0	0.2	-10~+70	3000	•	-	•	-	-	-
	H20P2-8G/01	PVC	绿	亮光	PET	白	布纹	2.0	2	40	8	2.2	0.2	-10~+70	3000	•	-	•	-	-	-
	H20P2-8W/01	PVC	白	亮光	PET	白	布纹	2.0	2	40	8	2.2	0.2	-10~+70	3000	•	-	-	-	-	-
	H20P2-8BL/01	PVC	蓝	亮光	PET	白	布纹	2.0	2	40	8	2.2	0.2	-10~+70	3000	•	-	-	-	-	-
	H20P2-8GY/02	PVC	灰	亚光	PET	白	布纹	2.0	2	40	8	2.2	0.2	-10~+70	3000	•	-	-	-	-	-
	H20P2-8BG/01	PVC	墨绿	亮光	PET	白	布纹	2.0	2	40	8	2.2	0.2	-10~+70	3000	•	-	-	-	-	-
	H20P2-8BG/02	PVC	墨绿	亚光	PET	白	布纹	2.0	2	40	8	2.2	0.2	-10~+70	3000	•	-	-	-	-	-
	H20P2-8BK/02	PVC	黑	亚光	PET	白	布纹	2.0	2	40	8	2.2	0.2	-10~+70	3000	•	-	-	-	-	-
	S20P2-8BK/02	PVC	黑	亚光	PET	白	布纹	2.0	2	40	8	2.2	0.2	-10~+70	3000	•	-	-	•	-	-
	H20P2-8Y/02	PVC	黄	亮光	PET	白	布纹	2.0	2	40	8	2.2	0.2	-10~+70	3000	•	-	-	-	-	-
	H30P2-8W/01	PVC	白	亮光	PET	白	布纹	3.0	2	60	8	3.3	0.2	-10~+70	3000	•	-	-	-	-	-
	H30P2-8G/01	PVC	绿	亮光	PET	白	布纹	3.0	2	60	8	3.3	0.2	-10~+70	3000	•	-	-	-	-	-
	H30P2-8BL/01	PVC	蓝	亮光	PET	白	布纹	3.0	2	60	8	3.3	0.2	-10~+70	3000	•	-	-	-	-	-
	H30P2-8W/02	PVC	白	亚光	PET	白	布纹	3.0	2	60	8	3.3	0.2	-10~+70	3000	•	-	-	-	-	-
	H30P2-8BG/02	PVC	墨绿	亚光	PET	白	布纹	3.0	2	60	8	3.3	0.2	-10~+70	3000	•	-	-	-	-	-
	H30P2-8GY/02	PVC	灰	亚光	PET	白	布纹	3.0	2	60	8	3.3	0.2	-10~+70	3000	•	-	-	-	-	-
	H30P2-8BK/02	PVC	黑	亚光	PET	白	布纹	3.0	2	60	8	3.3	0.2	-10~+70	3000	•	-	-	-	-	-
	H40P3-12W/01	PVC	白	亮光	PET	白	布纹	4.0	3	100	12	4.6	0.2	-10~+70	3000	•	-	-	-	-	-
	H40P3-12G/01	PVC	绿	亮光	PET	白	布纹	4.0	3	100	12	4.6	0.2	-10~+70	3000	•	-	-	-	-	-
	H40P3-12BK/02	PVC	黑	亚光	PET	白	布纹	4.0	3	100	12	4.6	0.2	-10~+70	3000	•	-	-	-	-	-
	H40P3-12BG/01	PVC	墨绿	亮光	PET	白	布纹	4.0	3	100	12	4.6	0.2	-10~+70	3000	•	-	-	-	-	-
	H50P3-12W/01	PVC	白	亮光	PET	白	布纹	5.0	3	150	12	6.0	0.2	-10~+70	3000	•	-	-	-	-	-
	H50P3-12G/01	PVC	绿	亮光	PET	白	布纹	5.0	3	150	12	6.0	0.2	-10~+70	3000	•	-	-	-	-	-
	H60P4-16G/01	PVC	绿	亮光	PET	白	布纹	6.0	4	200	16	7.0	0.2	-10~+70	3000	•	-	-	-	-	-
	H60P4-16W/01	PVC	白	亮光	PET	白	布纹	6.0	4	200	16	7.0	0.2	-10~+70	3000	•	-	-	-	-	-
	H80P5-22G/01	PVC	绿	亮光	PET	白	布纹	8.0	5	220	22	10.0	0.2	-10~+70	3000	•	-	-	-	-	-
	H90P5-22G/01	PVC	绿	亮光	PET	白	布纹	9.0	5	220	22	11.0	0.2	-10~+70	3000	•	-	-	-	-	-
	H100P5-22G/01	PVC	绿	亮光	PET	白	布纹	10.0	5	220	22	12.0	0.2	-10~+70	3000	•	-	-	-	-	-
	H30P2-8BL/02	PVC	蓝	亚光	PET	白	布纹	3.0	2	60	8	3.3	0.2	-10~+70	3000	•	-	-	-	-	-
	H20P2-8Y/02	PVC	黄	亚光	PET	白	布纹	2.0	2	40	8	2.2	0.2	-10~+70	3000	•	-	-	-	-	-
	H20P2-8W/02	PVC	白	亚光	PET	白	布纹	2.0	2	40	8	2.2	0.2	-10~+70	3000	•	-	-	-	-	-
	H20P2-8BL/02	PVC	蓝	亚光	PET	白	布纹	2.0	2	40	8	2.2	0.2	-10~+70	3000	•	-	-	-	-	-
	H20P2-8GY/02	PVC	灰	亚光	PET	白	布纹	2.0	2	40	8	2.2	0.2	-10~+70	3000	•	-	-	-	-	-
	H20P2-8LEN/02	PVC	柠檬黄	亚光	PET	白	布纹	2.0	2	40	8	2.2	0.2	-10~+70	3000	•	-	-	-	-	-
	H15U2-8Y/01	PU	黄色	亮光	PET	白	布纹	1.5	2	30	8	1.5	0.2	-20~+80	3000	•	-	-	-	•	-
	H15U2-8BG/02	PU	墨绿	亚光	PET	白	布纹	1.5	2	30	8	1.5	0.2	-20~+80	3000	•	-	-	-	•	-
	H15U2-8BK/02-BK	PU	黑色	亚光	PET	白	布纹	1.5	2	30	8	1.5	0.2	-20~+80	3000	•	-	-	-	•	-
	H20U2-8BG/02	PU	墨绿	亚光	PET	白	布纹	2.0	2	60	8	2.2	0.2	-20~+80	3000	•	-	-	-	•	-
H30U2-8BG/02	PU	墨绿	亚光	PET	白	布纹	3.0	3	100	8	3.3	0.2	-20~+80	3000	•	-	-	-	•	-	
H40U3-12BG/02	PU	墨绿	亚光	PET	白	布纹	4.0	3	120	12	4.4	0.2	-20~+80	3000	•	-	-	-	•	-	
H15U2-8Y/02	PU	黄色	亚光	PET	白	布纹	1.5	2	30	8	1.5	0.2	-20~+80	3000	•	-	-	-	•	-	
H20U2-8BK/02-W	PU	黑色	亚光	PET	白	布纹	2.0	2	60	8	2.2	0.2	-20~+80	3000	•	-	-	-	•	-	
S20U2-8BK/02	PU	黑色	亚光	PET	白	布纹	2.0	2	60	8	2.2	0.3	-20~+80	3000	•	-	-	•	•	-	
N10P1-4FT/01	PVC	透明	亮光	PET	白	布纹	1.0	1	10	4	1.0	0.2	-10~+70	3000	•	-	•	-	-	-	
W20P2-8BG/01	PVC	墨绿	亮光	PET	白	布纹	2.0	2	40	8	2.2	0.2	-10~+70	3000	-	•	-	-	-	-	
H70P3-12BK/01	PVC	黑	亮光	PET	白	布纹	7.0	3	120	12	8.5	0.2	-10~+70	2000	•	-	-	-	-	-	
H30P2-8BK/02-02	PVC	黑	亚光	PET	白	亚光	3.0	2	60	8	3.6	0.2	-10~+70	3000	•	-	-	-	-	-	
H20P2-8Y/01	PVC	黄	亮光	PET	白	布纹	2.0	2	40	8	2.2	0.2	-10~+70	3000	•	-	-	-	-	-	
H20P2-8OY/01	PVC	黄	亮光	PET	白	布纹	2.0	2	40	8	2.2	0.2	-10~+70	3000	•	-	-	-	-	-	
D30K1-14BK/19	PVK	黑	粗布纹	PVK	黑	粗布纹	3.0	1	60	14	3.3	0.2	-10~+80	2000	•	-	-	•	-	-	
D37K1-21BK/19	PVK	黑	粗布纹	PVK	黑	粗布纹	3.6	1	80	21	3.9	0.2	-10~+80	2000	•	-	-	•	-	-	
D40K1-25BK/19	PVK	黑	粗布纹	PVK	黑	粗布纹	4.0	1	100	25	4.2	0.2	-10~+80	2000	•	-	-	•	-	-	
N15P2-8FT/01	PVC	透明	亮光	PET	白	布纹	1.5	2	40	8	1.6	0.2	-10~+70	3000	•	-	-	-	-	-	
N10P1-4FT/02	PVC	透明	亚光	PET	白	布纹	1.0	1	15	4	1.0	0.2	-10~+70	3000	•	-	•	-	-	-	

产品系列 Product line	产品型号 Model	表面Surface			底面Bottom			厚度 Thickness	布层数 Fabric layer number	最小辊轮直径 Φmm The minimum roller diameter is φmm	1%延展受力 N/mm 1% extension force N/mm	单位重量 kg/m ²	摩擦系数 Coefficient of friction	工作温度℃ Operating Temperature℃	最大生产宽度 Maximum production width	横向稳定 Lateral stability	成槽性 Slotting	刀口 Blade	低噪音 Low noise	耐油性 Oil resistance	防静电 Anti-static
		材质 Material	颜色 Color	花纹 Patterns	材质 Material	颜色 Color	花纹 Patterns														
普通输送带 Ordinary conveyor belt	H13P2-8W/19	PVC	白	布纹	PET	白	布纹	1.3	2	20	8	1.2	0.2	-10~+70	3000	•	-	•	-	-	-
	H18P2-8W/19	PVC	白	布纹	PET	白	布纹	1.8	2	40	8	1.7	0.2	-10~+70	3000	•	-	-	-	-	-
	S20P1-8BK/04	PVC	黑	浅钻石纹	PET	白	布纹	2.0	1	30	6	2.2	0.2	-10~+70	2000	•	-	-	•	-	-
	H20P2-8BK/03	PVC	黑	钻石纹	PET	白	布纹	2.0	2	40	8	2.2	0.2	-10~+70	3000	•	-	-	-	-	-
	H20P2-8W/03	PVC	白	钻石纹	PET	白	布纹	2.0	2	40	8	2.2	0.2	-10~+70	3000	•	-	-	-	-	-
	H20P2-8G/03	PVC	绿	钻石纹	PET	白	布纹	2.0	2	40	8	2.2	0.2	-10~+70	3000	•	-	-	-	-	-
	H30P2-8G/03-01	PVC	绿	钻石纹	PET	白	亮光	3.0	2	80	8	3.2	0.2	-10~+70	3000	•	-	-	-	-	-
	H30P2-8W/03	PVC	白	钻石纹	PET	白	布纹	3.0	2	60	8	3.0	0.2	-10~+70	3000	•	-	-	-	-	-
	H30P2-8G/03	PVC	绿	钻石纹	PET	白	布纹	3.0	2	60	8	3.0	0.2	-10~+70	3000	•	-	-	-	-	-
	H50P3-12G/03-01	PVC	绿	钻石纹	PVC	白	绿	5.0	3	150	8	5.2	0.2	-10~+70	3000	•	-	-	-	-	-
	H50P3-12G/03	PVC	绿	钻石纹	PET	白	布纹	5.0	3	150	8	5.1	0.2	-10~+70	3000	•	-	-	-	-	-
	H28P2-8G/12	PVC	绿	直条纹	PET	白	布纹	2.8	2	60	8	2.8	0.2	-10~+70	3000	•	-	-	-	-	-
	H28P2-8BL/12-OT/WA	PVC	蓝	直条纹	PET	白	布纹	2.8	2	60	8	2.8	0.2	-10~+70	3000	•	-	-	-	•	-
	H30P2-8BK/12	PVC	黑	直条纹	PET	白	布纹	3.0	2	60	8	3.0	0.2	-10~+70	3000	•	-	-	-	-	-
	H28P2-8BG/06	PVC	墨绿	工字纹	PET	白	布纹	2.8	2	60	8	3.0	0.2	-10~+70	3200	•	-	-	-	-	-
	H50P2-8W/20	PVC	白	鱼骨纹	PET	白	布纹	5.0	2	80	8	5.2	0.2	-10~+70	2000	•	-	-	-	-	-
	H50P2-8G/20	PVC	绿	鱼骨纹	PET	白	布纹	5.0	2	80	8	5.2	0.2	-10~+70	2000	•	-	-	-	-	-
	H50P2-8GY/20	PVC	灰	鱼骨纹	PET	白	布纹	5.0	2	80	8	5.2	0.2	-10~+70	2000	•	-	-	-	-	-
	H60P2-8BG/20	PVC	墨绿	鱼骨纹	PET	白	布纹	6.0	2	100	8	6.5	0.2	-10~+70	2000	•	-	-	-	-	-
	H60P2-8GY/20	PVC	灰	鱼骨纹	PET	白	布纹	6.0	2	100	8	6.5	0.2	-10~+70	2000	•	-	-	-	-	-
	S60P2-17G/11-03	PVC	绿	搓衣板	PET	白	钻石纹	6.0	2	120	17	6.5	0.2	-10~+70	2000	•	-	-	•	-	-
	H50P2-8G/11	PVC	绿	搓衣板	PET	白	布纹	5.0	2	80	8	5.2	0.2	-10~+70	2000	•	-	-	-	-	-
	H40P2-8G/08	PVC	绿	浅花纹草带	PET	白	布纹	4.0	2	60	8	4.0	0.2	+5~+60	3000	•	-	-	-	-	-
	H50P2-8BG/09	PVC	墨绿	深花纹草带	PET	白	布纹	5.0	2	60	8	4.5	0.2	+5~+60	3000	•	-	-	-	-	-
	H50P2-8BK/09	PVC	黑	深花纹草带	PET	白	布纹	5.0	2	60	8	4.5	0.2	+5~+60	3000	•	-	-	-	-	-
	H50P2-8RR/09	PVC	玫红	深花纹草带	PET	白	布纹	5.0	2	60	8	4.5	0.2	+5~+60	3000	•	-	-	-	-	-
	H50P2-8Y/09	PVC	黄	深花纹草带	PET	白	布纹	5.0	2	60	8	4.5	0.2	+5~+60	3000	•	-	-	-	-	-
	H60P3-12BG/09	PVC	墨绿	深花纹草带	PET	白	布纹	6.0	3	100	12	6.5	0.2	+5~+60	3000	•	-	-	-	-	-
	H50P2-8G/05	PVC	绿	中花纹草带	PET	白	布纹	5.0	2	60	8	4.8	0.2	+5~+60	3000	•	-	-	-	-	-
	H50P2-8G/09	PVC	绿	深花纹草带	PET	白	布纹	5.0	2	60	8	4.5	0.2	+5~+60	3000	•	-	-	-	-	-
	S50P2-10BG/10	PVC	墨绿	波浪形草带	PET	白	布纹	5.0	2	60	8	4.8	0.2	+5~+60	3000	•	-	-	•	-	-
	S50P2-17G/08	PVC	绿	浅花纹草带	PET	白	布纹	5.0	2	60	8	5.0	0.2	+5~+60	3000	•	-	-	•	-	-
	H70P2-8G/14	PVC	绿	大人字600	PET	白	布纹	7.0	2	120	8	6.5	0.2	-10~+70	600	•	-	-	-	-	-
	H50P2-8G/13	PVC	绿	人字	PET	白	布纹	5.0	2	80	8	4.5	0.2	-10~+70	2000	•	-	-	-	-	-
	H50P2-8G/43	PVC	绿	大人字	PET	白	布纹	5.0	2	100	8	3.5	0.2	-10~+70	2000	•	-	-	-	-	-
	H50P2-8G/23	PVC	绿	圆点	PET	白	布纹	5.0	2	80	8	3.5	0.2	-10~+70	2000	•	-	-	-	-	-
	H98P3-12BK/17	PVC	黑	菱形格	PET	白	布纹	9.8	3	100	12	9.2	0.2	-10~+70	2000	•	-	-	-	-	-
	H98P3-12BL/17	PVC	蓝	菱形格	PET	白	布纹	9.8	3	100	12	9.2	0.2	-10~+70	2000	•	-	-	-	-	-
	H98P3-12BG/17	PVC	墨绿	菱形格	PET	白	布纹	9.8	3	100	12	9.2	0.2	-10~+70	2000	•	-	-	-	-	-
	H98P3-12BK/16	PVC	黑	一字纹	PET	白	布纹	9.8	3	100	12	9.2	0.2	-10~+70	2000	•	-	-	-	-	-
	H98P3-12BL/16	PVC	蓝	一字纹	PET	白	布纹	9.8	3	100	12	9.2	0.2	-10~+70	2000	•	-	-	-	-	-
	H98P3-12GY/16	PVC	灰	一字纹	PET	白	布纹	9.8	3	100	12	9.2	0.2	-10~+70	2000	•	-	-	-	-	-
	H120P4-70BG/29	PVC	墨绿	网眼	PET	白	布纹	12.0	4	450	24	13.6	0.2	-10~+70	2000	•	-	-	-	-	-
	H70P2-8BG/28	PVC	墨绿	凸齿	PET	白	布纹	7.0	2	80	8	5.8	0.2	-10~+70	2000	•	-	-	-	-	-
	H70P2-8BG/27	PVC	墨绿	双向凸齿	PET	白	布纹	7.0	2	80	8	5.8	0.2	-10~+70	2000	•	-	-	-	-	-
S16P1-4W/21	PVC	白	草皮纹	PET	白	布纹	1.6	1	30	4	1.5	0.2	-10~+70	2000	•	-	-	•	-	-	
H70P2-10R/40	PVC	红	布纹	PET	白	布纹	7.0	2	100	8	8.0	0.2	-10~+70	2000	•	-	-	-	-	-	
H15P2-8W/19	PVC	白	布纹	PET	白	布纹	1.5	2	40	8	1.3	0.2	-10~+70	3000	•	-	-	-	-	-	
H20P2-8BL/03	PVC	蓝	钻石纹	PET	白	布纹	2.0	2	40	8	2.2	0.2	-10~+70	3000	•	-	-	-	-	-	
S50P2-8G/05	PVC	绿	中花纹草带	PET	白	布纹	5.0	2	60	8	4.8	0.2	+5~+60	3000	•	-	-	•	-	-	
S12P1-4BK/04	PVC	黑	浅钻石纹	PET	白	布纹	1.2	1	20	4	1.2	0.2	-10~+70	2000	•	-	•	•	-	-	
H15U1-6W/12	PU	白色	直条纹	PET	白色	布纹	1.5	1	30	6	1.3	0.2	-20~+80	3000	•	•	-	-	•	-	
H16U2-8BL/39	PU	蓝色	布纹	PET	白色	布纹	1.6	2	30	8	1.6	0.2	-20~+80	3000	•	-	-	-	•	-	
H12U2-8W/19	PU	白色	布纹	PET	白色	布纹	1.2	2	20	8	1.2	0.2	-20~+80	3000	•	-	-	-	•	-	
H15U2-8W/19	PU	白色	布纹	PET	白色	布纹	1.5	2	30	8	1.5	0.2	-20~+80	3000	•	-	-	-	•	-	
H18U2-8BL/03	PU	蓝色	钻石纹	PET	白色	布纹	1.8	2	40	8	1.6	0.2	-20~+80	3000	•	-	-	-	•	-	
H20U2-8W/03	PU	白色	钻石纹	PET	白色	布纹	2.0	2	60	8	1.8	0.2	-20~+80	3000	•	-	-	-	•	-	
H14U1-8CO/19	PU	咖啡色	布纹	PET	白色	布纹	1.4	2	30	8	1.4	0.2	-20~+80	3000	•	-	-	-	•	-	
H15U2-4GY/16	PU	灰色	布纹	PET	白色	布纹	1.5	2	20	8	1.5	0.2	-20~+80	1100	•	-	-	-	•	-	
H15U2-8BL/19	PU	蓝色	小钻石纹	PET	白色	布纹	1.5	2	30	8	1.4	0.2	-20~+80	2000	•	-	-	-	•	-	
H13U2-8BL/D19	PU	蓝色	布纹	PET	白色	布纹	1.3	2	25	8	1.3	0.2	-20~+80	3000	•	-	-	-	•	-	
H15U2-8BL/D19	PU	蓝色	布纹	PET	白色	布纹	1.5	2	30	8	1.5	0.2	-20~+80	3000	•	-	-	-	•	-	

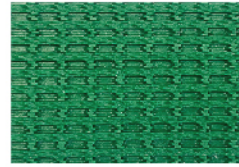
产品系列 Product line	产品型号 Model	表面Surface			底面Bottom			厚度 Thickness	布层数 Fabric layer number	最小辊轮直径 Φ mm The minimum roller diameter is φ mm	1%延展受力 N/mm 1% extension force N/mm	单位重量 kg/m ²	摩擦系数 Coefficient of friction	工作温度℃ Operating Temperature℃	最大生产宽度 Maximum production width	横向稳定 Lateral stability	成槽性 Slotting	刀口 Blade	低噪音 Low noise	耐油性 Oil resistance	防静电 Anti-static
		材质 Material	颜色 Color	花纹 Patterns	材质 Material	颜色 Color	花纹 Patterns														
防静电输送带 Anti-static conveyor belt	N10P1-4FT/01-HC9	PVC	透明	亮亮光	PET	白	布纹	1.0	1	10	4	1.0	0.2	-10~+70	3000	•	•	•	-	-	•
	H20P2-8G/01-HC8	PVC	绿	亮光	PET	白	布纹	2.0	2	40	8	2.2	0.2	-10~+70	3000	•	-	-	-	-	•
	H20P2-8G/01-HC9	PVC	绿	亮光	PET	白	布纹	2.0	2	40	8	2.2	0.2	-10~+70	3000	•	-	-	-	-	•
	H20P2-8G/02-HC8	PVC	绿	亚光	PET	白	布纹	2.0	2	40	8	2.2	0.2	-10~+70	3000	•	-	-	-	-	•
	H20P2-8G/02-HC9	PVC	绿	亚光	PET	白	布纹	2.0	2	40	8	2.2	0.2	-10~+70	3000	•	-	-	-	-	•
	H20P2-8GY/01-HC8	PVC	灰	亮光	PET	白	布纹	2.0	2	40	8	2.2	0.2	-10~+70	3000	•	-	-	-	-	•
	H20P2-8BK/02-HC9	PVC	黑	亚光	PET	白	布纹	2.0	2	40	8	2.2	0.2	-10~+70	3000	•	-	-	-	-	•
	H20P2-8Y/02-HC9	PVC	黄	亚光	PET	白	布纹	2.0	2	40	8	2.2	0.2	-10~+70	3000	•	-	-	-	-	•
	H18P2-8BK/19-HC6	PVC	黑	布纹	PET	白	布纹	1.8	2	40	8	1.7	0.2	-10~+70	3000	•	-	-	-	-	•
	H30P2-8BK/12-HC9	PVC	黑	直条纹	PET	白	布纹	3.0	2	60	8	3.0	0.2	-10~+70	3000	•	-	-	-	-	•
	H28P2-8BK/06-HC9	PVC	黑	工字纹	PET	白	布纹	2.8	2	60	8	3.0	0.2	-10~+70	3200	•	-	-	-	-	•
	H30P2-8G/01-HC8	PVC	绿	亮光	PET	白	布纹	3.0	2	60	8	3.3	0.2	-10~+70	3000	•	-	-	-	-	•
	H08U1-4BG/02-HC8	PU	墨绿	亚光	PET	白色	布纹	0.8	1	15	4	0.8	0.2	-20~+80	3000	•	•	•	-	•	•
	H10U1-4BK/02-HC8	PU	黑色	亚光	PET	白色	布纹	1.0	1	15	4	1.0	0.2	-20~+80	3000	•	•	•	-	•	•
	H10U1-4BG/02-HC8	PU	墨绿	亚光	PET	白色	布纹	1.0	1	15	4	1.0	0.2	-20~+80	3000	•	•	•	-	•	•
H14U2-8G/02-BK-HC8	PU	苹果绿	亚光	PET	白色	布纹	1.4	2	30	8	1.4	0.2	-20~+80	3000	•	-	•	-	•	•	
H15U2-8BG/02-BK-HC8	PU	墨绿	亚光	PET	白色	布纹	1.5	2	30	8	1.5	0.2	-20~+80	3000	•	-	•	-	•	•	
耐高温输送带 Temperature resistant conveyor belt	H14U1-8CO/19	PU	咖啡色	布纹	PET	咖啡色	布纹	1.4	2	30	8	1.4	0.2	-20~+80	3000	•	-	-	-	•	-
	H20P2-8W/25	PVC	白	细帆布	PET	白	布纹	2.0	2	60	8	2.2	0.2	-10~+100	3000	•	-	-	-	-	-
	H30P3-10W/25	PVC	白	细帆布	PET	白	布纹	3.0	3	70	8	3.0	0.2	-10~+100	3000	•	-	-	-	-	-
	H40P3-12W/25	PVC	白	细帆布	PET	白	布纹	4.0	3	120	12	4.0	0.2	-10~+100	3000	•	-	-	-	-	-
	H50P3-12W/26	PVC	白	粗帆布	PET	白	布纹	5.0	3	150	12	6.0	0.2	-10~+120	3000	•	-	-	-	-	-
	H50P3-12W/03-26	PVC	白	粗帆布	PET	白	钻石纹	5.0	3	150	12	5.8	0.2	-10~+120	3000	•	-	-	-	-	-
	H30P2-8BK/N	PVC	灰黑	毛毡	PET	白	布纹	3.0	2	70	8	3.0	0.2	-10~+120	2000	•	-	-	-	-	•
	H40P2-12BK/N	PVC	灰黑	毛毡	PET	白	布纹	4.0	2	100	8	4.0	0.2	-10~+120	2000	•	-	-	-	-	•
	NOVO25-HC/BK	PVC	灰黑	毛毡	PET	白	毛毡	2.5	1	40	4	1.3	0.2	-10~+120	2000	•	-	-	-	-	•
	NOVO40-HC/BK	PVC	灰黑	毛毡	PET	白	毛毡	4.0	1	70	10	3.1	0.2	-10~+120	2000	•	-	-	-	-	•
	NOVO55-HC/BK	PVC	灰黑	毛毡	PET	白	毛毡	5.5	1	120	10	3.1	0.2	-10~+120	2000	•	-	-	-	-	•
	H20P1-4BK/N	PVC	灰黑	毛毡	PET	白	布纹	2.0	1	60	4	2.2	0.2	-10~+120	2000	•	-	-	-	-	•
H20U2-8BK/02-HT	PU	黑色	亚光	PET	白色	布纹	2.0	2	60	8	2.2	0.2	-20~+120	2000	•	-	-	-	-	•	
食品输送带 Food conveyor belt	H12U2-8W/19	PU	白色	布纹	PET	白色	布纹	1.2	2	20	8	1.2	0.2	-20~+80	3000	•	-	-	-	•	-
	H15U2-8W/19	PU	白色	布纹	PET	白色	布纹	1.5	2	30	8	1.5	0.2	-20~+80	3000	•	-	-	-	•	-
	H13U2-8BL/19	PU	蓝色	布纹	PET	蓝色	布纹	1.3	2	25	8	1.3	0.2	-20~+80	3000	•	-	-	-	•	-
	H15U2-8BL/19	PU	蓝色	布纹	PET	蓝色	布纹	1.5	2	30	8	1.5	0.2	-20~+80	3000	•	-	-	-	•	-
	H13P2-8W/19	PVC	白	布纹	PET	白	布纹	1.3	2	20	8	1.2	0.2	-10~+70	3000	•	-	•	-	-	-
	H18P2-8W/19	PVC	白	布纹	PET	白	布纹	1.8	2	40	8	1.7	0.2	-10~+70	3000	•	-	-	-	-	-
	H15P2-8W/19	PVC	白	布纹	PET	白	布纹	1.5	2	40	8	1.3	0.2	-10~+70	3000	•	-	-	-	-	-
	H30P2-8W/02-OT	PVC	白	亚光	PET	白	布纹	3.0	2	60	8	3.3	0.2	-10~+70	3000	•	-	-	-	-	•
	H40P3-12W/01-OT	PVC	白	亮光	PET	白	布纹	4.0	3	100	12	4.6	0.2	-10~+70	3000	•	-	-	-	-	•
	S08U1-4W/02	PU	白色	亚光	PET	白色	布纹	0.8	1	15	4	0.8	0.3	-20~+80	3000	•	•	•	•	•	-
	H08U1-4Y/01	PU	黄色	亮光	PET	白色	布纹	0.8	1	15	4	0.8	0.2	-20~+80	3000	•	•	•	-	•	-
	H12U2-8W/02	PU	白色	亚光	PET	白色	布纹	1.2	2	20	8	1.2	0.2	-20~+80	3000	•	•	•	-	•	-
	H15U2-8W/02	PU	白色	亚光	PET	白色	布纹	1.5	2	20	8	1.5	0.2	-20~+80	3000	•	•	•	-	•	-
	H15U2-8BL/02	PU	蓝色	亚光	PET	白色	布纹	1.5	2	30	8	1.5	0.2	-20~+80	3000	•	-	-	-	•	-
	H20U2-8W/01	PU	白色	亮光	PET	白色	布纹	2.0	2	60	8	2.2	0.2	-20~+80	3000	•	-	-	-	•	-
	H20U2-8BL/01	PU	蓝色	亮光	PET	白色	布纹	2.0	2	60	8	2.2	0.2	-20~+80	3000	•	-	-	-	•	-
	H30U3-12W/01	PU	白色	亮光	PET	白色	布纹	3.0	3	100	12	3.3	0.2	-20~+80	3000	•	-	-	-	•	-
	H20U2-8BL/02	PU	蓝色	亚光	PET	白色	布纹	2.0	2	60	8	2.2	0.2	-20~+80	3000	•	-	-	-	•	-
	H15U1-4W/D02	PU	白色	亚光	PET	白色	布纹	1.5	2	30	8	1.5	0.2	-20~+80	3000	•	-	-	-	•	-
	N15U2-8FT/02	PU	透明	亚光	PET	白色	布纹	1.5	2	30	8	1.5	0.2	-20~+80	3000	•	-	-	-	•	-
H20U1-4W/02	PU	白色	亚光	PET	白色	布纹	2.0	1	50	4	2.2	0.2	-20~+80	3000	•	-	-	-	•	-	
S15S2-8W/01	SIR	白色	亮光	PET	白色	布纹	1.5	2	40	8	1.5	0.2	-20~+80	2000	•	-	•	•	•	-	
H13U2-8CO/PTFE	PU	咖啡色	亮光	PET	白色	布纹	1.5	2	40	8	1.3	0.2	-20~+80	1000	•	-	•	-	•	-	

COMMON PATTERNS

常见花纹



名称: 波浪草纹 **Name: Wavy grass**
 厚度: 2.4mm Thickness: 2.4mm
 特性: 高摩擦 Features: High friction
 行业: 包装、物流 Industry: Packaging, logistics



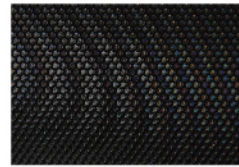
名称: 草型 **Name: Grass**
 厚度: 1.6 Thickness: 1.6
 特性: 高摩擦 Features: High friction
 行业: 包装、物流 Industry: Packaging, logistics



名称: 搓衣板纹 **Name: Washboard grain**
 厚度: 1.5mm Thickness: 1.5mm
 特性: 斜坡输送 Features: Ramp conveyor
 行业: 农业、矿产 Industry: Agriculture, minerals



名称: 大人字纹 **Name: The big herringbone pattern**
 厚度: 3.0mm Thickness: 3.0mm
 特性: 斜坡输送 Features: Ramp conveyor
 行业: 农业、包装 Industry: Agriculture, packaging



名称: 高尔夫纹 **Name: Wavy grass**
 厚度: 0.8mm Thickness: 0.8mm
 特性: 中摩擦 Features: Friction
 行业: 物流、运动 Industry: Logistics, sports



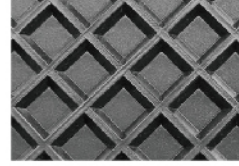
名称: 工字(格子) **Name: I-word (grid)**
 厚度: 0.5mm Thickness: 0.5mm
 特性: 中等摩擦、斜面输送 Features: Medium friction, inclined conveying
 行业: 纺织、电子 Industry: Textiles, electronics



名称: 横圆台 **Name: The horizontal circle**
 厚度: 3.0mm Thickness: 3.0mm
 特性: 高握持力、易清洁 Features: High grip strength, easy to clean
 行业: 木工、金属加工 Industry: Woodworking and metal working



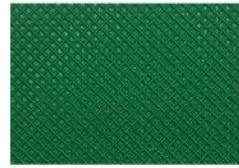
名称: 锯齿纹 **Name: Zigzag**
 厚度: 5.0mm Thickness: 5.0mm
 特性: 高握持力、易清洁 Features: High grip strength, easy to clean
 行业: 石材、包装 Industry: Stone, packaging



名称: 菱形格 **Name: Diamond lattice**
 厚度: 3.8mm Thickness: 3.8mm
 特性: 高握持力、易清洁 Features: High grip strength, easy to clean
 行业: 木工、金属加工 Industry: Woodworking and metal working



名称: 细布纹 **Name: Fine Grain**
 厚度: 0.1mm Thickness: 0.1mm
 特性: 防粘、高摩擦 Features: Anti-stick, high friction
 行业: 通用 Industry: General



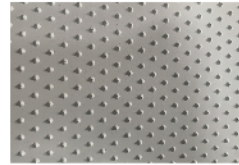
名称: 细钻石纹 **Name: Fine Diamond Grain**
 厚度: 0.2mm Thickness: 0.2mm
 特性: 防粘 Features: Anti-stick
 行业: 食品 Industry: Food



名称: 小人字纹 **Name: Little herringbone pattern**
 厚度: 2.0mm Thickness: 2.0mm
 特性: 斜坡输送 Features: Ramp conveyor
 行业: 包装、物流 Industry: Packaging, logistics



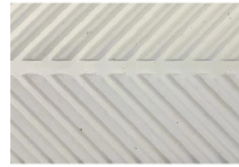
名称: 小网眼纹 **Name: Small mesh pattern**
 厚度: 0.35mm Thickness: 0.35mm
 特性: 中摩擦 Features: Friction
 行业: 包装、食品 Industry: Packaging, food



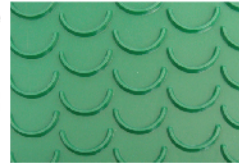
名称: 圆点纹 **Name: Polka dots**
 厚度: 2.8mm Thickness: 2.8mm
 特性: 易清洁、斜面输送 Features: Easy to clean, beveled conveying
 行业: 纺织、烟草 Industry: Textiles, tobacco



名称: 亚光 **Name: Sub-light**
 厚度: - Thickness: -
 特性: 防粘 Features: Anti-stick
 行业: 通用 Industry: General



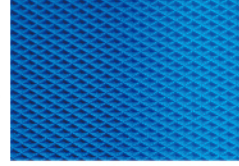
名称: 鱼骨纹 **Name: Fish bone pattern**
 厚度: 1.8mm Thickness: 1.8mm
 特性: 高握持力 Features: High grip strength
 行业: 木工、玻璃 Industry: Carpentry, glass



名称: 月牙纹 **Name: Crescent**
 厚度: 2.2mm Thickness: 2.2mm
 特性: 易清洁、斜面输送 Features: The bag is easy to clean, bevel conveying
 行业: 农业、包装 Industry: Agriculture, packaging



名称: 直条纹 **Name: Straight stripes**
 厚度: 0.7mm Thickness: 0.7mm
 特性: 横向稳定、斜面输送 Features: Transversely stable, inclined conveying
 行业: 物流、电子 Industry: Logistics, electronics



名称: 钻石纹 **Name: Diamond Grain**
 厚度: 0.6mm Thickness: 0.6mm
 特性: 防粘 Features: Anti-stick
 行业: 包装、物流 Industry: Packaging, logistics



名称: 小锯齿 **Name: Small serrated teeth**
 厚度: 0.6mm Thickness: 0.6mm
 特性: 高握持力、易清洁 Features: High grip strength, easy to clean
 行业: 包装、食品 Industry: Packaging, food

工业皮带接驳

INDUSTRIAL BELT SPLICING

工艺介绍 Process introduction

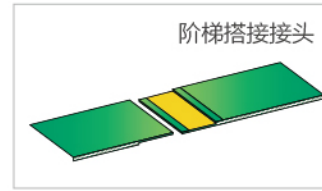
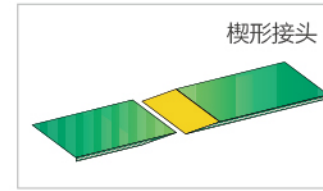
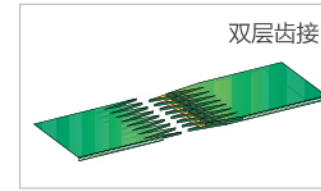
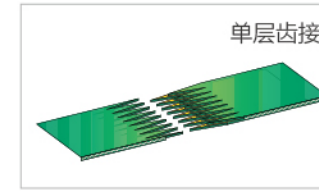
工业皮带接头方法的选择，取决于皮带型号以及的工作环境。对特定应用需要结合综合因素选择。除了接头的可靠性之外，接头的柔软性、厚薄公差、安装的难易程度等，都是选择接头方法的重要依据。若需要了解适合自己的接头工艺，请来电咨询。

The selection of an industrial belt joint method depends on the belt model and the working environment. For specific applications, a comprehensive combination of factors needs be considered. In addition to the reliability of the joint, the flexibility of the joint, thickness tolerance, and ease of installation, etc., are all important factors choosing a joint method. If you need to understand the joint technology suitable for you, please call for consultation.

热压工艺 Hot pressing process

热压接头是一种高效可靠的输送带接头方式，尤其适用于高速的传输系统。

Hot pressing joint is an efficient and reliable conveyor belt joint, especially suitable for high-speed transmission systems.



机械钉扣 Mechanical fastening

机械钉扣工艺常见的有针扣、蝴蝶扣、拉链扣、狼牙扣等；

机械钉扣是一种便捷简单的输送带接头方式，尤其适用于短期更换或恶劣环境下使用。

Mechanical nail buckle process common needle buckle, bow buckle, zipper buckle, spike buckle and so on.

Mechanical fastener is a convenient and simple conveyor belt joint, especially suitable for short-term replacement or harsh environment use.

针扣规格 Pin Buckle specifications

规格	输送带厚度mm	最小辊筒直径mm	钢丝尺寸mm	穿销规格mm
HG1	1.6-2.8	51	1	1.6
HG1LL	2.5-3.2	51	1	1.6
HG2	3.5-4.0	51	1.4	2
HG2X	2.8-3.5	51	1.2	1.6
HG3	4.0-4.8	76	1.4	2.3
HG4	4.8-5.6	102	1.4	3
HG4X	3.0-3.5	102	1.2	1.6
HG5	5.6-7.1	127	1.4	3
HG6	7.1-7.9	152	1.4	3

蝴蝶扣 Butterfly clasp

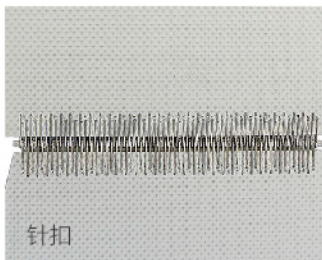
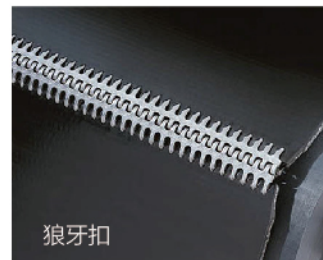
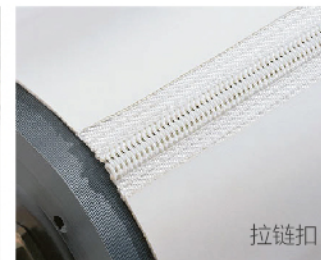
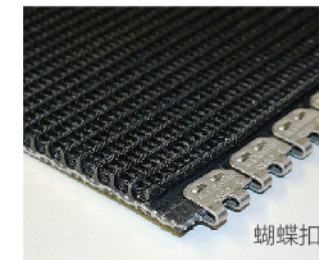
规格	输送带厚度mm	最小辊筒直径mm	抗拉强度KN/m	穿销规格mm
MRS32 镀锌钢	1.5-3.2	50	17	2
MRS32 不锈钢	1.5-3.2	50	17	2
MRS48 镀锌钢	3.2-4.8	75	28	3
MRS48 不锈钢	3.2-4.8	75	28	3
MRS64 镀锌钢	4.8-6.4	102	35	4.5
MRS64 不锈钢	4.8-6.4	102	35	4.5

狼牙扣 Wolf tooth buckle

规格	输送带厚度mm	最小辊筒直径mm	抗拉强度KN/m	穿销规格mm
HK1	1.5-2.4	38	7.8	1.6
HX1	1.5-2.4	38	7.8	1.6
HK7	2.4-3.6	51	8.7	1.6
HK7 碳钢	2.4-3.6	51	8.7	1.6
HX7	2.4-3.6	51	8.7	1.6
HK15	3.2-5.0	64	11.4	2.3

拉链扣 Zipper fastener

规格	输送带厚度mm	最小辊筒直径mm	穿销规格mm
拉链扣	1.0-4.0	30	0.9



正反面加工 FRONT AND BACK PROCESSING

工艺介绍 Process introduction

工业皮带正反面加工主要是指在输送带的工作表面或非工作表面进行各种加工处理，以增强其性能和适应不同的应用场景。我们常见的输送带加工有导条加工、海绵加工、橡胶加工、异形挡块加工等。

The front and back surface processing of industrial belt mainly refers to various processing on the working surface or non-working surface of conveyor belt, in order to enhance its performance and adapt to different application scenarios. Our common conveyor belt processing guide processing, sponge processing, rubber processing, abnormal block processing.

橡胶及海绵 Rubber and sponge

输送带表层可以覆盖多种特定性能的材料以实现更高的耐磨性、更高的耐油性、更适用的硬度等。

The top layer of the conveyor belt can be covered with various materials with specific properties to achieve higher wear resistance, higher oil resistance, more applicable hardness etc.



覆盖层类型/Overlay type				
覆盖层类型	海绵	蓝布海绵	橡胶	橡胶
原料	聚氨酯泡沫	聚氨酯泡沫	天然橡胶	丁腈橡胶
硬度 (ShA)	35	30	红	黑白
颜色	黑/绿	蓝	红	黑白
粘合方式	贴合	贴合	贴合	贴合
厚度范围 (mm)	2-10	3-8	3-10	3-10
加工公差	+/-0.5	+/-0.5	+/-0.5	+/-0.5
温度范围	-10 +60	-10 +60	-10 +80	-10 +100
摩擦系数	0.4	0.3	0.6	0.6
耐水性	一般	一般	很好	很好
耐磨性	一般	一般	良好	良好
耐油性	良好	一般	差	良好

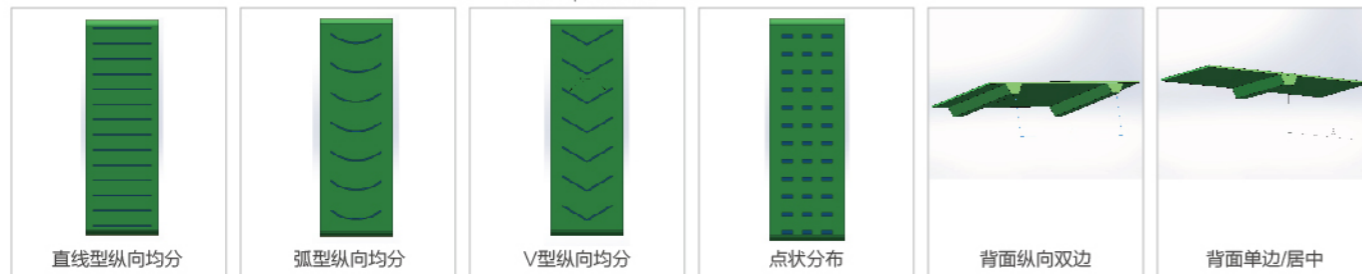
导条加工 Guide strip processing

输送带导条加工改善输送带导向和支撑。主要用于确保输送带在运行时保持正确的轨迹，防止输送带在运行中发生跑偏。也有横向表面增加摩擦及定位格挡的作用。

The processing of conveyor belt guide strips improves the guidance and support of the conveyor belt. It is mainly used to ensure that the conveyor belt maintains the trajectory during operation, preventing the conveyor belt from deviating during operation. It also has the function of increasing friction and positioning on the lateral surface.

Parameter参数 品名Name	截面示意图 A sketch of the cross section	材质 Material	型号 Models	尺寸b×h×s[mm] Size b×h×s [mm]	工作温度 Operating temperature	最小转弯直径 Minimum turning diameter	
						表面/Surface	底面/Bottom
导条 Guide strip		PVC	D5	5x3x2.5	-10-70	20	30
			D6	6x4x3	-10-70	20	40
			D8	8x5x4	-10-70	50	60
			D10	10x6x5	-10-70	60	70
			D13	13x8x6.5	-10-70	80	90
			D17	17x11x8	-10-70	90	100
			D22	22x14x11	-10-70	150	200
			D30	30x17x14	-10-70	180	230
			F8	8*8	-10-70	80	90
			F10	10*10	-10-70	90	100
		PU	B40	40*5	-10-70	60	70
			D5	5x3x2.5	-20-80	20	30
			D6	6x4x3	-20-80	20	40
			D8	8x5x4	-20-80	50	60
			D10	10x6x5	-20-80	60	70
			D13	13x8x6.5	-20-80	80	90
			D17	17x11x8	-20-80	90	100
			D10-3	10*3*6	-20-80	20	40
			F8	8*8	-20-80	80	90
			F10	10*10	-20-80	90	100

- 1、导条颜色与输送带颜色一致，特殊需求可批量定制；
2、除表中标准导条外，异形导条也可根据要求定制。
- 1.The guide bar color is consistent with the conveyor belt color, and special requirements can be customized in batches;
2. Besides the standard guide strip in the table, the special-shaped guide strip can also be customized according to the requirements.



SKIRT BAFFLE CONVEYOR BELT

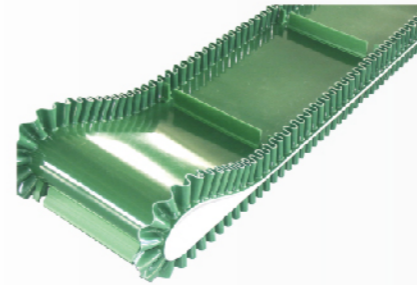
裙边挡板输送带

产品介绍 Product Introduction

裙边挡板输送带也叫爬坡输送带。用于散装货物或小件物品的倾斜输送，组合与尺寸多样。挡板与裙边通常一起使用，满足散装货物的运输，在生产中应用广泛。可以节省空间，提高生产效率。

输送带的生产加工是通过高频、加热、胶水粘接、机械加工等方法将各种材料组合、整理、加工而成。

The skirt baffle conveyor belt is also called the climbing conveyor belt. Used for inclined conveyance of bulk cargo or small articles in various combinations and sizes. Baffle and skirt are usually used together to meet the bulk cargo transport, in the production of a wide range of applications. Can save space, improve production efficiency. Conveyor belt production and processing is through high-frequency, heating, glue bonding, mechanical processing methods will be a variety of materials combination, finishing, processing.



组合方式 Combination mode

裙边、输送带的组合用于解决输送过程中两侧落料的情况；

挡板、输送带的组合用于散装货物和小件物品的倾斜输送的提升输送；

裙边、挡板、导条、输送带的组合用于提升物料的同时，也防止输送带跑偏。

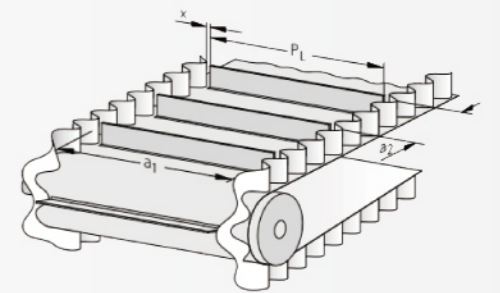
The combination of the skirt and the conveyor belt is used for solving the blanking situation of the two sides in the conveying process;

The combination of the baffle and the conveyor belt is used for the lifting conveying of the inclined conveying of the bulk goods and the small articles;

The combination of skirt, baffle, guide strip and conveyor belt is used for lifting material and preventing conveyor belt from deviation

裙边挡板输送带参数 Skirt plate conveyor parameters

- 成品皮带尺寸可用**
长度：2000-100000mm 宽度：200-1500mm
- 裙边左右公差**
± 2.0 mm
- 挡板间距公差**
a2公差 ± 1.5mm，正常以实际挡板个数均匀分布在输送带表面。
- 裙边之间的内距离（有效使用宽度）**
a1=50-1300mm, PL max= a1-2x, x=0-3mm或图纸标示尺寸, PL公差 ± 3.0mm。



裙边参数表 Skirt parameter table

参数品名 Parameter name	局部示意图 Local schematic diagram	材质 Material	高度h[mm] Height H [mm]	宽度w[mm] Width W [mm]	厚度t[mm] Thickness T [mm]	工作温度[°C] Operating temperature [°C]	最小转弯直径[mm] Minimum turning diameter [mm]
裙边 Hemline		PVC	10-100	35/50	3或5	-10-70	h*2.5
			100-150	75		-10-70	h*2.5
		PU	10-30	25	2	-20-70	h*2.5
			30-100	35		-20-70	h*2.5

- 说明：1、裙边颜色与输送带颜色一致，特殊要求需批量定制；
2、除表中标准模具外，裙边可根据要求定制模具。

Description:
1、skirt color and conveyor belt color, special requirements can be customized;
2、in addition to the table standard mold, skirt can be customized according to requirements mold.

预制裙边 Prefabricated hemline



加工范围: 10-150mm
加工宽度: 35/50/75mm
颜色: 绿/白/黑/蓝等
成品加工方式: 热贴合
长度: 无限长度
适用温度: -10-60° C
最小转弯半径: 高度*2.5 (mm)

Processing Range: 10-150mm
Processing width: 35/50/75mm
Color: green/white/black/blue, etc
Finished product processing method: hot fit
Length: infinite length
Applicable Temperature: -10-60° C
Minimum turning radius: height * 2.5(mm)

挡板参数表 Baffle Parameter Table

挡板 Baffle	截面示意图 A sketch of the cross section	材质 Material	型号 Models	尺寸b×h[mm] Size B×h [mm]	工作温度[°C] Operating temperature [°C]	最小转弯直径[mm] Minimum turning diameter [mm]
T型 X型 T型 PU I型		PVC	T10	10x10	-10-70	40
			T30	30x30	-10-70	90
			T40	30x40	-10-70	120
			T50	30x50	-10-70	120
			T60	30x60	-10-70	120
			T70	30/40x70	-10-70	150
			T80	40x80	-10-70	150
			T90	40x90	-10-70	150
			T100	40x100	-10-70	180
			X20	30x20	-10-70	60
		X30	30x30	-10-70	90	
		X40	30x40	-10-70	120	
		X50	30x50	-10-70	120	
		X60	30x60	-10-70	120	
		X70	30x70	-10-70	150	
		X80	35x80	-10-70	150	
		X90	40x80	-10-70	180	
		I(5-70)	6*(5-70)	-10-70	50	
		PU	T10	10x10	-20-80	60
			T20	15x20	-20-80	60
T30	15x30		-20-80	60		
T40	15x40		-20-80	60		
T50	15x50		-20-80	60		
T60	15x60		-20-80	60		
X30	20x30		-20-80	90		
X40	20x40		-20-80	70		
X50	20x50		-20-80	70		
I(5-70)	5*(5-70)		-20-80	50		

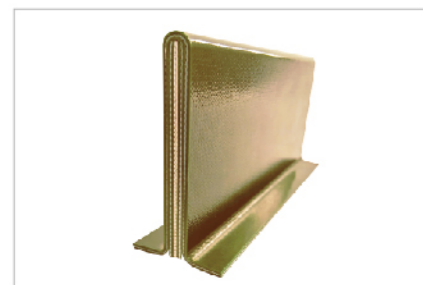
说明:

- 1、挡板颜色与输送带颜色一致, 特殊要求需可批量定制;
- 2、除表中标准挡板外, 异形挡板也可根据要求定制模具和挡块;
- 3、X型挡板的角度65度±5度

Description:

- 1、the color of the baffle and conveyor belt, special requirements can be customized;
- 2、in addition to the table standard baffle, special-shaped baffle can also be customized according to the requirements of the mold and baffle;
- 3、The angle of x baffle is 65 degrees ± 5 degrees

自制加强型挡板 Self-made reinforced baffle



高度范围: 10-150mm
加工厚度: 4-10mm
底脚宽度: 5-30mm
颜色: 绿/白/黑/蓝等
成品加工方式: 热贴合
每根长度: 10-2000mm
适用温度: -10-60° C
最小转弯半径: 高度*2 (mm)

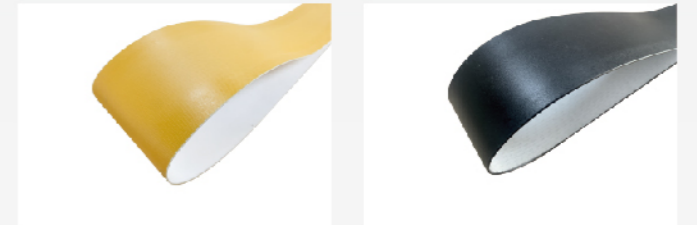
Height Range: 10-150mm
Processing thickness: 4-10mm
Sole width: 5-30mm
Color: green/white/black/blue, etc
Finished product processing method: hot fit
Length: 10-2000mm
Applicable Temperature: -10-60° C
Minimum turning radius: height * 2(mm)

CONVEYOR BELT EDGE TREATMENT

输送带边缘处理

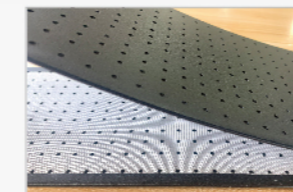
产品介绍 Product Introduction

包边及封边技术可以防止输送带边缘起毛,产生飞絮造成物料污染。
机器封边可以防止油、油脂、水、异物和细菌侵入皮带,同时增加了输送带的使用寿命。
倒角技术可以防止皮带直角边刮蹭物料,造成物料划伤。



The skirt baffle conveyor belt is also called the climbing conveyor belt. Used for inclined conveyance of bulk cargo or small articles in various combinations and sizes. Baffle and skirt are usually used together to meet the bulk cargo transport, in the production of a wide range of applications. Can save space, improve production efficiency. Conveyor belt production and processing is through high-frequency, heating, glue bonding, mechanical processing methods will be a variety of materials combination, finishing, processing.

加工工艺 Processing technology



包边(圆弧边)

宽度误差±1mm,厚度误差±0.2mm
边缘宽度10mm左右,牢度高
皮带表面变化小,整体美观
适用于低速运转,接头处误差±1.5mm

Wrap Edge (arc edge)

Width error ± 1mm, thickness error ± 0.2 mm
Edge width about 10mm, high fastness
Belt surface change small, the overall beauty
Suitable for low speed operation, the error of joint is ± 1.5 mm

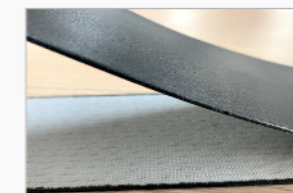


封边(直角边)

宽度误差±0.5mm,厚度误差±0.2mm
边缘加热处理,宽度10mm左右,牢度高
适用于高速运转,部分产品会有翘边情况
(具体应用请咨询销售工程师)

Edge sealing (right angle edge)

Width error ± 0.5 mm, thickness error ± 0.2 mm
Edge heat treatment, width of about 10mm, high fastness
Apply to high-speed operation, part of the product will have warping situation (specific application please consult sales engineer)

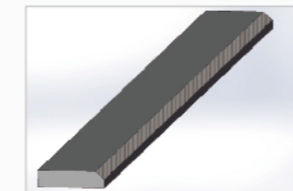


机器封边(圆弧边)

宽度误差±0.5mm,厚度误差-0.2mm
边缘机器封边,宽度15mm左右,一体成型
输送带整体美观
适用于高速运转,部分成品可实现完全密封,
延长输送带使用寿命

Machine Edge sealing (circular edge)

Width error ± 0.5 mm, thickness error -0.2 mm
Edge machine sealing edge, width of about 15 mm, integral molding conveyor belt as a whole beautiful
Suitable for high-speed operation, part of the finished products can be completely sealed, extend the service life of conveyor belt



弹性带倒角

倒角输送带,减少输送带边缘对产品表面对损伤
倒角优化了输送带过辊性能,延长输送带使用寿命

Elastic band Chamfer

Chamfer conveyor belt, reduce the conveyor belt edge on the product surface damage
The chamfering optimizes the over-roller performance of the Conveyor Belt and prolongs the service life of the Conveyor Belt

适用性参数 Applicability parameters

	材质 Material	宽度(mm) Width (mm)	周长(mm) Perimeter (mm)	厚度(mm) Thickness (mm)
包边 Wrap the edge	PVC/PU/PE等热塑性材料 PVC/PU/PE and other thermoplastic materials	≥50	≥320	1.5-3.0
封边 Edge sealing	PVC/PU/PE等热塑性材料 PVC/PU/PE and other thermoplastic materials	≥50	≥1200	1.5-4.0
机器封边 Machine edging	PVC/PU/PE等热塑性材料 PVC/PU/PE and other thermoplastic materials	≥30	≥700	0.6-5.0
皮带倒角 Belt chamfer	弹性带 Elastic Band	≥15	≥800	1.2-2.0

皮带边处理技术涉及的加工工序复杂,具体选型推荐请咨询销售工程师。

The processing technology of belt edge treatment involves complex processing procedures. For specific selection recommendations, please consult the sales engineer.

DRILLING AND SLOTTING PROCESS

打孔开槽处理工艺

工艺介绍 Process introduction

此类工业皮带在印刷、天地盖纸盒、光伏锂电等行业有广泛应用。多数以负压的形式，通过透气孔保障表面产品在运输过程中不出现偏移。

除了负压吸风，打孔还有排水、透气、精准定位等功能，对应的应用场景有产品清洗、数控裁切、食品加工等。

This kind of industrial belt is widely used in the fields of printing, paper box with Heaven and earth cover, photovoltaic lithium electricity and so on. Most of the form of negative pressure, through the air hole to ensure that the surface of the product in the course of transport does not appear offset. In addition to negative pressure suction, drilling and drainage, ventilation, precision positioning and other functions, the corresponding application scenarios are product cleaning, CNC cutting, food processing.



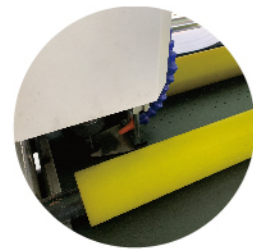
加工工艺 Processing technology



激光打孔
Laser drilling

激光打孔机几乎可以穿透所有工业皮带产品。通过建立或导入加工图纸，便捷、快速的对工业皮带表面进行加工。打孔效率高、打孔大小不受限制。除圆孔外，也可以打椭圆孔、腰孔、异形切割等。

The laser punch can penetrate almost any industrial belt product. By establishing or importing the machining drawings, the surface of the industrial belt can be processed conveniently and quickly. High drilling efficiency, drilling size is not limited. In addition to round hole, can also play oval hole, waist hole, special-shaped cutting.



数控钻孔
CNC drilling

数控钻孔加工效率高、加工宽度可达3200mm。简易编程、自动对刀、一键加工。对大孔径圆孔加工有独特的优势，精准高效、孔槽干净无毛边。

NC drilling has high efficiency and can be up to 3200mm in width. Simple programming, automatic tool setting, one key processing. Has the unique superiority to the big aperture round hole processing, the precision high efficiency, the hole groove clean does not have the burrs.

打孔分布以图纸实际需求为准，精度要求准确标注，工业皮带具有延展性，孔距会有一定的公差。

Punch distribution to the actual requirements of the drawings, accuracy requirements for accurate marking, industrial belt has a malleability, hole spacing will have a certain tolerance.

加工范围 Processing Range

加工工艺	打孔直径 1-12mm	12mm以上	小数直径 Decimal diameter
激光打孔 Laser drilling	✓	✓	✓
数控钻孔 NC drilling	✓	✗	✗

孔径D=±0.5mm，加工精度高可电话咨询业务人员。

加工公差 Machining tolerance

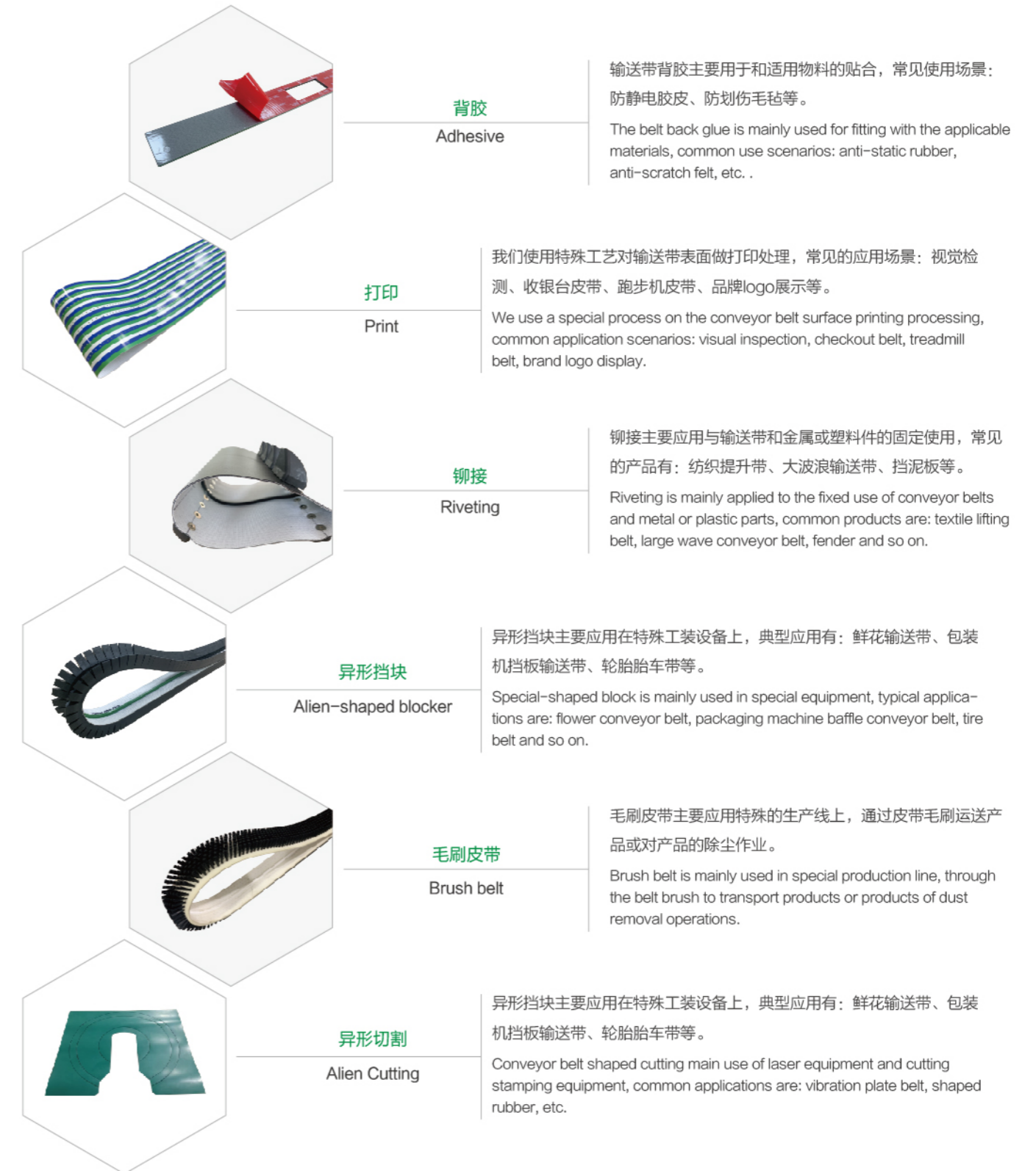
宽度孔中心距 Width hole center distance	公差单位/mm Tolerance unit/mm	长度孔中心距 Length Hole Center distance	激光公差单位/mm Laser tolerance unit/mm	激光公差单位/mm Laser tolerance unit/mm
0-50	±0.3	0-50	±0.3	±0.5
50-100	±0.5	50-100	±0.5	±1
100-150	±1	100-150	±1	±1
150以上	±1	150以上	±1	±1.5

加工最大宽度3200mm，工艺选择具体要求可咨询业务人员。

OTHER PROCESSES

其他工艺

除了我们常见的裙边挡板导条类的加工外，输送带还有很多特殊加工工艺，这里我们介绍几种工艺改善型的产品。
In addition to the common processing of skirt plate guide strips that we often see, conveyor belts have many special processing techniques. Here we introduce some process products.



POLYURETHANE SYNCHRONOUS BELT

聚氨酯同步带

产品介绍 Product introduction

聚氨酯同步带是一种由聚氨酯材料制成，并内嵌钢丝或凯夫拉等增强层的传动带，具有精准同步传动功能。它广泛应用于精密机械、自动化设备和其他对传动要求高的工业领域。

Polyurethane synchronous belt is a kind of transmission belt made of polyurethane material and embedded with steel wire or Kevlar, which has precise synchronous transmission function. It is widely used in precision machinery, automation equipment and other transmission requirements of high industrial fields.

聚氨酯同步带的特点 Characteristics of polyurethane synchronous belt

高强度
耐用性

High strength durability

精确同步
传动

Precision synchronous transmission

低噪音
平稳运行

Low noise Stable operation

耐化学
腐蚀

Resistant to chemical corrosion

宽温度
范围

Wide temperature range

应用领域 Application



自动化设备

Automation equipment



纺织工业

Textile industry



包装机械

packaging machinery



食品和医药行业

Food and pharmaceutical industries



轮胎工业

Tire industry

PU同步带标准参数 PU synchronous belt standard parameters

型号 Models	节距 Pitch	常见宽度mm Common width mm	最小带齿数 Minimum number of gear teeth	开口拉力N/mm Open tension N/mm	环带拉力N/mm Ring tension N/mm	无缝拉力N/mm Seamless tension N/mm
XL	5.08	6.4 7.9 9.5 12.7 19.1 25.4	10	39	20	39
L	9.525	9.5 12.7 19.1 25.4 38.1 50.8 76.2 101.6	12	65	33	65
H	12.7	12.7 19.1 25.4 38.1 50.8 76.2 101.6	14	65	32	65
XH	22.23	25.4 38.1 50.8 76.2 101.6	18	132	66	132
HTD5M	5	10 12 15 20 25 32 50 75 100	13	72	33	76
HTD8M	8	10 15 20 25 30 50 85 100	18	147	74	155
HTD14M	14	25 40 55 85 115 150	25	296	148	289
T5	5	6 8 10 12 16 20 25 32 50 75 100	10	32	15	32
T10	10	10 12 16 20 25 32 40 50 75 100	12	85	42	77
T20	20	16 20 25 32 50 75 100	15	134	67	159
AT5	5	10 12 16 20 25 32 50 75 100	12	70	35	76
AT10	10	12 16 20 25 32 40 50 75 100	15	155	77	152
AT20	20	16 20 25 32 50 75 100	18	273	136	290



SYNCHRONOUS BELT PROCESSING

同步带加工

同步带加工
覆盖层

The cover of the synchronous belt is machined

加工覆盖层提供橡胶、APL、聚氨酯、海绵、PVC花纹、羊毛毡、人造革、硅胶等材料进行贴合工艺。主要改善同步带输送面的耐磨性、硬度、摩擦力等特性。

The processing cover provides rubber, APL, polyurethane, sponge, PVC pattern, wool felt, artificial leather, silica gel and other materials for bonding process. Mainly improve the wear resistance, hardness, friction and other characteristics of synchronous belt conveyor.

同步带加工
挡块

Processing block with synchronous belt

挡块又叫梯格或导条，添加在聚氨酯同步带上，用于分离、分拣、驱动或推送产品。加挡块的皮带一般是用于需要多次精准拾取和放置物品的生产线。

Also known as a ladder or slider, the blocks are added to the polyurethane synchronous belt to separate, sort, drive, or push products. Add block belt is generally used for the need to accurately pick up and place multiple items of the production line.

同步带异形
加工

Special-shaped machining of synchronous belt

除了基础材料和工艺外，我们还可以进行机加工改良，完全定制皮带：定制形状、磨削、开槽/刀削添加皮带齿侧的织物、真空沉孔、胶上的深槽、沉孔和打孔、斜槽、打孔/穿孔、型腔、开槽、锯齿、沟槽、水切割等。

In addition to basic materials and processes, we can also improve machining, full custom belt: custom shape, grinding, slotting/cutting fabric with added belt teeth, vacuum counterbores, deep grooves on glue, counterbores and perforations, beveled grooves, perforations/perforations, cavity, slotting, serrations, grooves, water cutting, etc. .

同步带假齿

Synchronous Belt denture

假齿产品为常规齿型及AT10、AT20等提供机械连接。安装机械附件的假齿可以改善传统焊接挡块牢度不够、无法承受施加在挡块上的载荷而导致拉脱故障的情况。

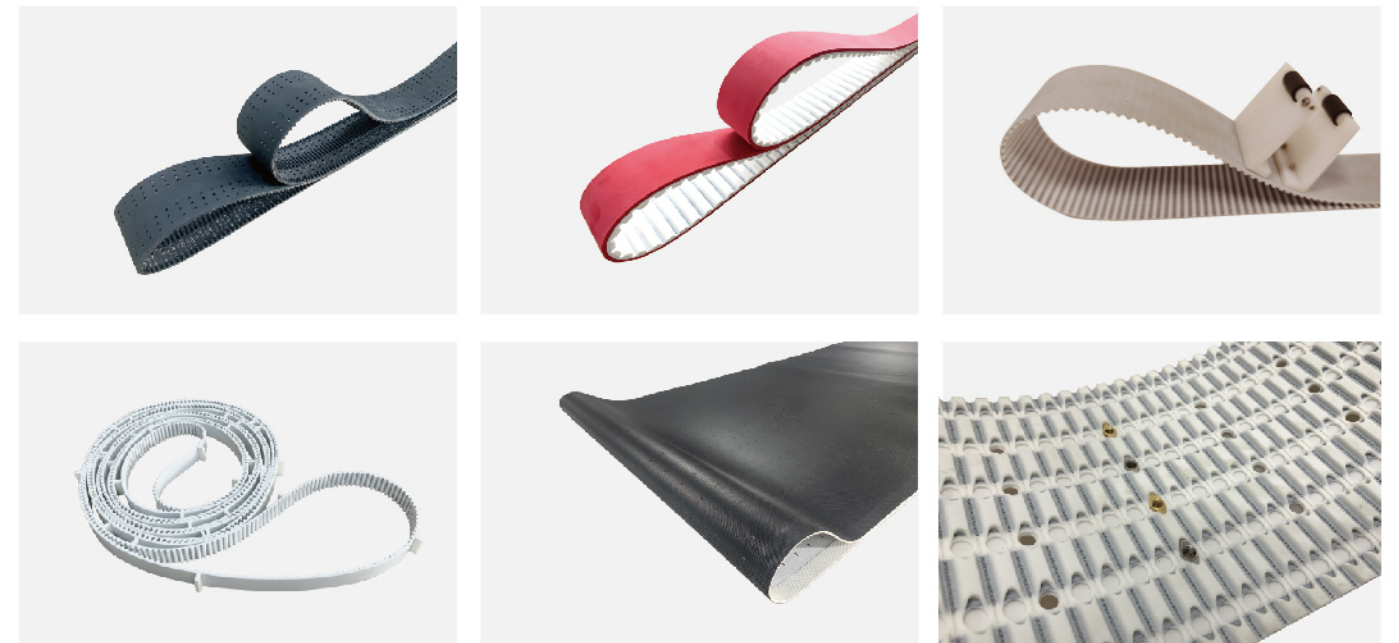
Denture products for the conventional tooth type and AT10, AT20 to provide mechanical connections. The installation of false teeth of mechanical accessories can improve the failure of traditional welded baffles due to insufficient fastness and failure to withstand the load applied on the baffles.

混合加工

Mixed processing

混合皮带加工用一条皮带同时实现了同步和输送的性能。以提供精确定位和精确跟踪。我们已在锂电、食品等领域成功使用了混合皮带解决方案。

Mixed belt processing uses a belt to achieve both synchronous and conveying performance. To provide precise positioning and accurate tracking. We have successfully used mixed belt solutions in areas such as lithium-ion batteries and food.



PLANE TRANSMISSION BELT

平面传动带

产品介绍 Product introduction

平面传动带是一种广泛应用于机械传动和输送系统中的工业产品。它的结构通常较为简单，由一层或多层材料组成，包括橡胶、皮革、织物或合成材料，具有平整的带面，用于将动力从一个驱动轴传递到另一个从动轴，或用于物料的输送。

Plane belt is a kind of industrial product widely used in mechanical transmission and conveying system. Its structure is usually simple, consisting of one or more layers of material, including rubber, leather, fabric or synthetic, with a flat surface for the transfer of power from one drive shaft to another, or for the transportation of materials.

平面传动带的特点 The characteristics of plane transmission belt



高效率传动
High efficiency transmission



耐久性强
High durability



低噪音
Low noise



多种表面处理
Various surface treatments

应用领域 Application



纺织工业

Textile industry



印刷和包装行业

Printing and packaging industry



纸张加工造纸工业

Paper processing
Papermaking industry



食品加工

Food processing



电子行业

Electronics industry

常见平带参数 Common ribbon parameters

产品系列	产品型号	双面传动	单面传动	切线传动	厚度	摩擦系数	最小辊轮直径Φmm	1%延展受力N/mm	安装伸长率%	工作温度℃	接驳方式
聚酯传动带 Polyester conveyor belt	T2E/20	●	●	●	2.0	≥0.7	25	12	0.6-1.5%	-20-70	齿接
	T2E/24	●	●	●	2.4	≥0.7	45	13	0.6-1.5%	-20-70	齿接
	T3E/27	●	●	●	2.7	≥0.7	70	18	0.6-1.5%	-20-70	齿接
	T4E/31	●	●	●	3.1	≥0.7	100	25	0.6-1.5%	-20-70	齿接
尼龙传动带 Nylon conveyor belt	T0H/15	●	●	●	1.5	0.7	35	3.5	1.5-2.5%	-20-100	搭接
	T1H/20	●	●	●	2.0	0.7	75	7.5	1.5-2.5%	-20-100	搭接
	T3/30	●	●	●	3.0	0.7	100	10	1.5-2.5%	-20-100	搭接
	T4R/39	●	●	●	4.0	0.7	150	15	1.5-2.5%	-20-100	搭接
	DG-30	●	●	●	3.0	0.6	50	5	1.5-2.5%	-20-100	搭接
	DG-40	●	●	●	4.0	0.6	50	5	1.5-2.5%	-20-100	搭接
弹性带 Elastic band	DG2-60	●	●	●	6.0	0.6	85	8.5	1.5-2.5%	-20-100	搭接
	UR40U	●	●	●	1.5	1.8	10	0.25	3-8%	-20-60	齿接
	UU8E	●	●	●	1.2	1.6	14	8	0.3-2%	-20-70	齿接
	UU20U	●	●	●	1.1	1.3	10	0.25	3-8%	-20-60	齿接



CHAIN PLATE

链板

产品介绍 Product introduction

链板是一种工业输送设备中的关键部件，通常由金属或工程塑料制成，用于输送各种物料或产品。它通过链条驱动，结构坚固，适合重载和高强度的工业输送任务。链板的设计使其在运输过程中具有较强的稳定性和耐用性。

Chain Plate is a key component of industrial conveying equipment, usually made of metal or engineering plastics, used to transport a variety of materials or products. It is chain-driven, rugged and suitable for heavy-duty and high-intensity industrial transport tasks. The design of the chain plate makes it more stable and durable during transportation.

链板的主要特点 The main characteristics of chain plate



耐高温、耐腐蚀
High temperature resistance, corrosion resistance



结构坚固、负载能力强
Structurally robust and capable of carrying heavy loads



运转平稳
Operate smoothly



多种材质和规格可选
Available in various materials and specifications



耐磨损寿命长
Long wear-resistant life

链板的应用领域 Application area of chain plate

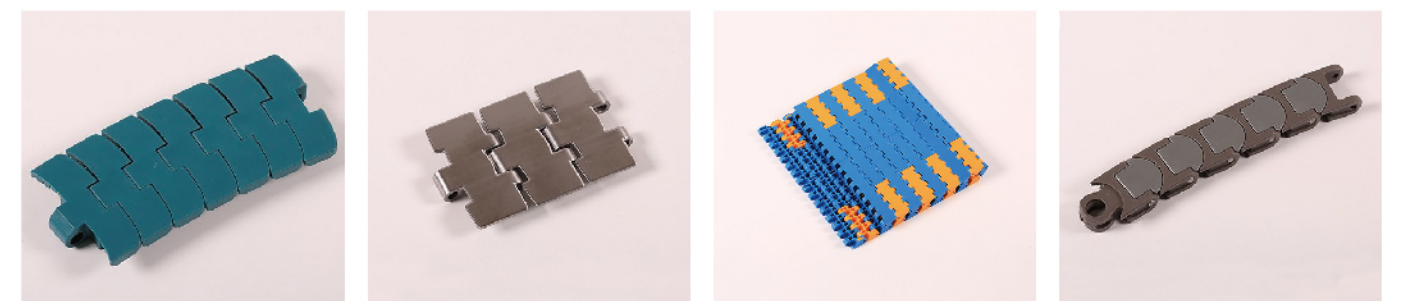
食品饮料行业
链板输送机常用于食品和饮料的生产和包装线中，适合搬运瓶装、罐装或袋装产品。特别是不锈钢链板，因其耐腐蚀和易清洗的特性，广泛应用于食品加工、肉类生产线等。
Chain conveyor is often used in food and beverage production and packaging line, suitable for handling bottled, canned or bagged products. In particular, stainless steel chain plate, because of its corrosion resistance and easy to clean characteristics, widely used in food processing, meat production lines.

包装行业
在自动化包装设备中，链板常用于将产品输送到包装机、装箱机等设备中，保证输送过程中产品的稳定性和准确性。
In automatic packaging equipment, chain plate is often used to transport products to packaging machines, packing machines and other equipment, to ensure the stability and accuracy of products in the delivery process.

汽车制造机械加工
重型链板常用于汽车零部件的传输、机械部件的搬运、涂装生产线等，能够承受较大的载荷，并保持稳定的输送性能。
Heavy chain plate is often used in automobile parts transmission, mechanical parts handling, painting production line, can withstand a larger load, and maintain a stable transport performance.

物流仓储行业
在自动化仓储系统中，链板输送设备常用于传输和分拣大型货物，适用于需要精确定位的场景。
In the automatic storage system, chain-plate conveyor is often used to transport and sort large-scale goods, suitable for the need of precise positioning of the scene.

电子家电行业
轻型链板适用于电子元器件、家电产品的装配和传输，能够在保证产品不受损的情况下高效搬运。
The light chain plate is suitable for the assembly and transmission of electronic components and household appliance products, and can handle the products efficiently without being damaged.



CONVEYOR 输送机



皮带输送机/Belt conveyor

皮带输送机是一种适用于轻工业、仓储、食品加工等场合的输送设备。皮带输送机以其结构紧凑、移动方便、操作简便、维护方便、定制灵活成为各类轻工业生产线上重要的输送设备之一。

The belt conveyor is a kind of transportation equipment suitable for the occasions of light industry, storage, food processing and so on. The belt conveyor has become one of the most important conveying equipment in light industry production line because of its compact structure, convenient movement, easy operation, convenient maintenance and flexible customization.



链板输送机/Chain plate conveyor

链板输送机是一种适用于重载和恶劣环境的输送设备，利用链条牵引承载物料的链板进行传输。其设计坚固耐用，具有广泛的应用场景。链板输送机凭借其高承载力、耐用性和适应复杂环境的能力，成为许多重工业和自动化生产中的关键输送设备。

Chain-plate conveyor is a kind of conveyor suitable for heavy load and harsh environment, using chain traction carrying materials chain plate for transmission. Its design is rugged and durable, with a wide range of applications. Chain conveyor with its high load-bearing capacity, durability and the ability to adapt to complex environment, become a lot of heavy industry and automated production of the key conveying equipment.



滚筒输送机/Roller conveyor

滚筒输送机是一种利用滚筒的旋转带动物料前进的输送设备，广泛应用于各种物料的水平或轻微倾斜输送。滚筒输送机因其高效、灵活、承载力强，成为许多工业和物流领域中重要的物料输送设备。

The roller conveyor is a kind of conveying equipment which uses the rotary drum to drive the material forward. It is widely used in horizontal or slightly inclined conveying of various materials. Because of its high efficiency, flexibility and strong bearing capacity, roller conveyor has become an important material conveying equipment in many industrial and logistics fields.



电动滚筒/Electric Roller

电动滚筒是一种将电机、减速器和滚筒集成在一起的传动装置，广泛应用于各类输送设备中，如皮带输送机和滚筒输送机。它以结构紧凑、安装简便和高效传动著称。电动滚筒因其结构简单、效率高、适应性强等特点，已成为输送系统中的重要驱动装置，广泛应用于工业和物流领域。

Electric roller is a kind of transmission device which integrates motor, reducer and roller, and is widely used in all kinds of conveying equipment, such as belt conveyor and roller conveyor. It is known for its compact structure, easy installation and efficient transmission. Because of its simple structure, high efficiency and strong adaptability, the electric roller has become an important driving device in conveying system, and is widely used in industry and logistics.

MING CHENG TRANSMISSION SOLUTION 铭成传动输送解决方案

铭成传动作为一家专业提供输送系统和传动产品的企业，致力于为各行业提供定制化的输送解决方案。根据不同的生产流程和应用需求，铭成传动的输送解决方案涵盖了各种类型的输送带、传动带及相关配件，确保高效、稳定的物料输送和传动。

Ming Cheng Transmission as a professional delivery system and transmission products of the enterprise, committed to the industry to provide customized delivery solutions. According to different production process and application requirements, the transmission solution of mingcheng transmission covers all types of conveyor belts, transmission belts and related accessories to ensure efficient and stable material transmission and transmission.

铭成传动的输送解决方案优势 Ming Cheng transmission transmission solution advantages

定制化设计 Custom design	<ul style="list-style-type: none"> 铭成传动根据客户的特定需求，提供个性化的输送带和传动系统解决方案，涵盖材质、规格、结构的选择，确保设备完美匹配生产工艺。 针对不同环境（高温、耐腐蚀、洁净室等）提供合适的输送带材料，如橡胶、聚氨酯、PVC、特氟龙等。 According to the specific needs of customers, mingcheng transmission provides personalized conveyor belt and transmission system solutions, covering the selection of materials, specifications, structure, to ensure that the equipment to match the production process. For different environments (high temperature, corrosion resistance, clean room, etc.) to provide suitable conveyor belt materials, such as rubber, polyurethane, PVC, teflon, etc.
高效和精准传动 Efficient and accurate transmission	<ul style="list-style-type: none"> 通过高质量的同步带、平面带、链板等产品，铭成传动保证输送系统的精准同步和高效运转，减少设备故障和停机时间。 优化输送流程，提升生产效率，降低能源消耗。 Through the high-quality synchronous belt, flat belt, chain plate and other products, mingcheng transmission to ensure the accurate synchronization of the transmission system and efficient operation, reduce equipment failure and downtime. Optimize transportation process, improve production efficiency, reduce energy consumption.
多行业覆盖 Multi-industry coverage	<ul style="list-style-type: none"> 铭成传动为多个行业提供输送解决方案，包括食品加工、饮料生产、物流运输、包装行业、纺织工业、电子制造、汽车制造等。 针对不同的行业要求，提供耐高温、耐腐蚀、耐油污、防静电等特性产品，确保输送系统在各种严苛环境下稳定运行。 Mingcheng transmission provides transportation solutions for a variety of industries, including food processing, beverage production, logistics, transportation, packaging industry, textile industry, electronics manufacturing, automotive manufacturing. According to the requirements of different industries, to provide high-temperature, corrosion resistance, oil resistance, anti-static characteristics of products, to ensure that the transport system in a variety of harsh environment and stable operation.
全方位服务 Full service	<ul style="list-style-type: none"> 铭成传动提供从设计、生产到安装、维护的全方位服务，确保系统在安装后长期保持最佳状态。 提供技术支持和售后服务，帮助客户解决输送和传动问题。 Mingcheng transmission provides a full range of services from design, production to installation and maintenance, ensuring that the system is in the best state for a long time after installation. Provide technical support and after-sales service to help customers solve conveying and transmission problems.
先进的技术应用 Advanced technology application	<ul style="list-style-type: none"> 采用最新的输送技术和材料科学，确保输送带的耐用性、柔韧性和高性能，满足复杂和高速的生产线需求。 运用数字化监控和自动化系统，实现智能化的输送流程管理。 State-of-the-art conveyor technology and materials science ensure the durability, flexibility and high performance of conveyor belts to meet the needs of complex and high-speed production lines. Using digital monitoring and automation system, intelligent transportation process management is realized.

